



# IDEX-P7M-64

Automated Chromosome Harvester

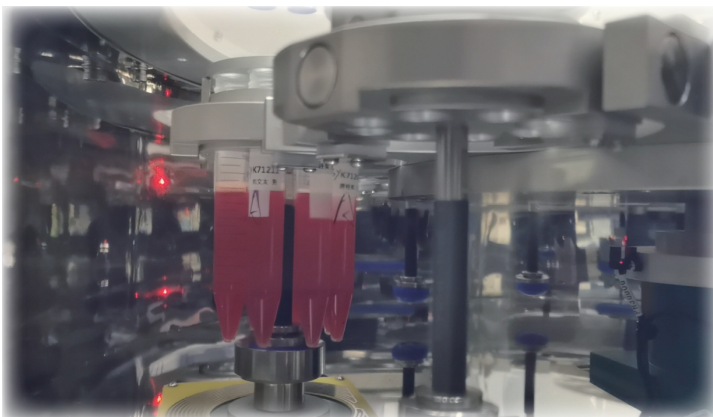
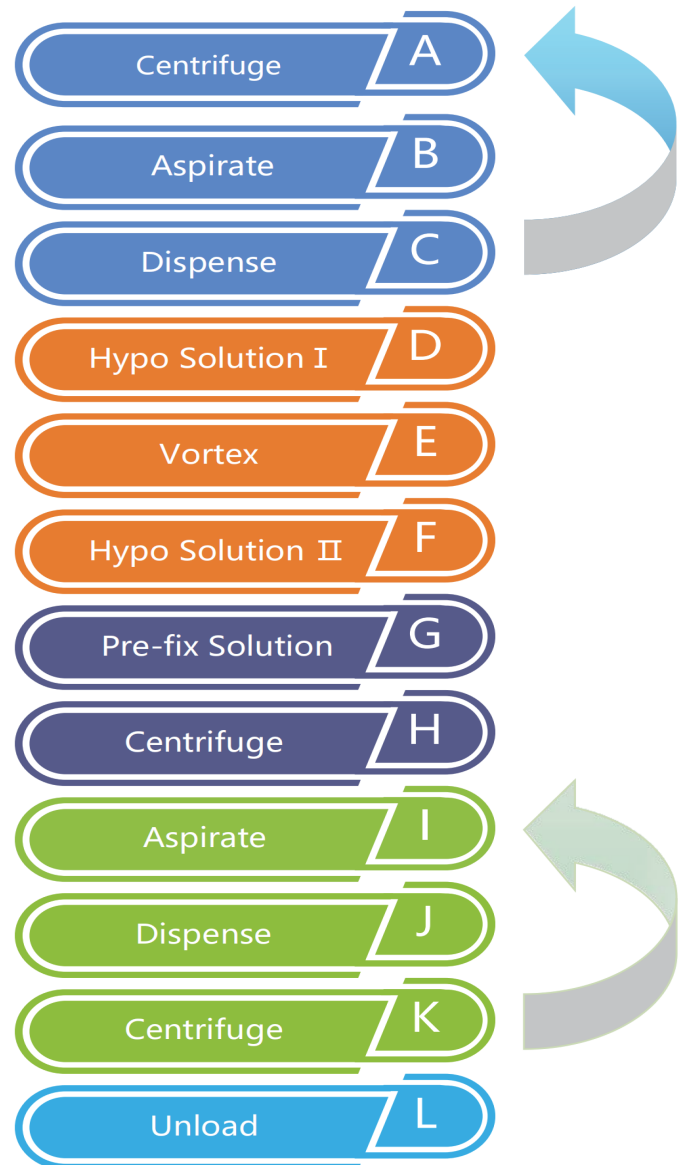


The IDEX-P7M-64 Chromosome Harvester is a fully automated instrument system developed specifically for cytogenetic laboratories to harvest metaphase chromosomes for karyotype and FISH analyses. With the P7M's walk-away automation you can minimize hands-on work, and maximize productivity, reproducibility, and reliability in your cytogenetics workflow. The P7M-64 Automated Chromosome Harvester is designed to process up to 64 sample tubes in one run in two hours, without manual intervention.

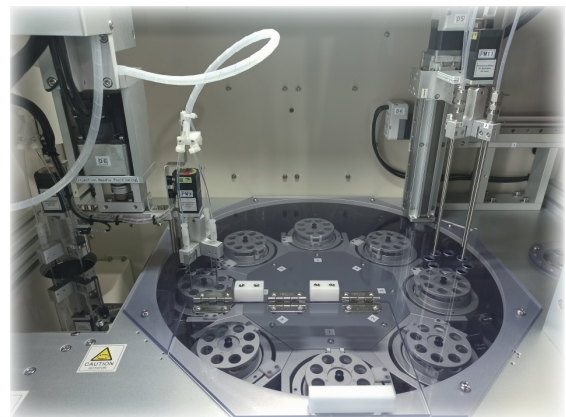
## Features:

- Fully automated stand-alone system – just “load and go” operation
- Up to 64 samples processed in each batch
- Simultaneous 4 channels hypotonic and 4 channels fixative injection with fast operation, saving over 30% cycle time
- Simultaneous reagent injection and aspiration
- Accurate reagent delivery with precision FMI metering pumps
- Processing steps include:
  - Centrifugation
  - Aspiration
  - Dispensing
  - Vortexing
  - Hypotonic injection
  - Fixative injection
- Samples maintained at 37°C in a warm air bath during select processing steps
- Easy-to-use with touch-screen interface with 6 pre-defined programs
- Remote monitoring with cellphone app

## Processing Cycles:



Vortexing station



Aspiration and injection work simultaneously

## Specifications:

Throughput: 1-64 samples/batch

Harvesting Cycle Time: 2 hr

Centrifugation: 1-10 min. at 1500 RPM (approximately a 320 g-force)

Conical centrifuge tube size: 15 mL

Centrifuge tube options: Falcon, Corning, Nunc, Sarstedt (Polypropylene)

Centrifuge chamber programmable temperature range: Ambient to 40°C

Hypotonic solution: 75 mM KCl

Fixative solution: Acetic acid:Methanol (1:3)

Other hypotonic solutions and fixative solutions can also be used

Control: 7-inch touch screen panel

Injection Module: 4 hypotonic solution injection pumps and 4 fixative solution injection pumps

Aspiration Module: 4 aspiration needles washed with water after each aspiration

Separation of hazardous waste and wash waste:

- o Supernatants aspirated off after centrifugation steps kept as hazardous medical waste
- o Water used to wash injection needles kept separately as nonhazardous waste

Operating environment:

- o Hypotonic solution: 15°C to 30°C warmed to 37°C before injection
- o Fixative solution: Chilled on ice with relative humidity: 20-60%

Weight: 980 lbs/445 kg

Dimensions: 40" (width) x 30" (depth) x 68" (height)

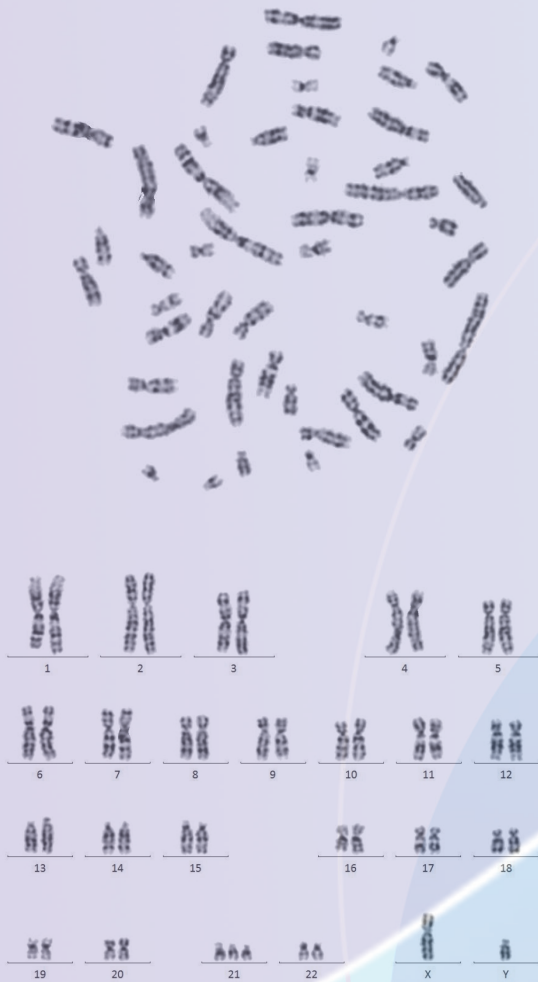
1010 mm (width) × 770 mm (depth) × 1720 mm (height)

Voltage requirement: 120 V/60 Hz

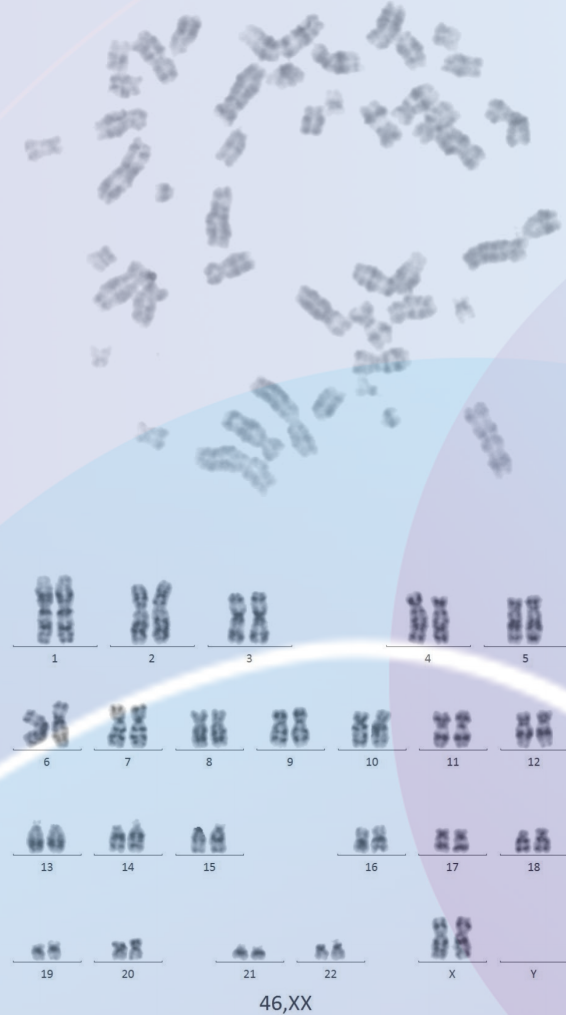
Power Usage: 1200 W or less

Cellphone App connectivity: Facilitates monitoring the alarm status of the run from your cell phone

## Blood Sample



## Bone Marrow Sample



### Order information:

Order Number: 01-P7M-64

#### Includes:

- o A 64-sample automated P7M Harvester system equipped with 8 Ceramic corrosion-resistant reagent injection pumps (precision 0-200  $\mu$ L) and accessories
- o Operator's Manual, On-site Installation and Training, One-Year Warranty and Documentation, and After-Sale Support

### Contact Information:

IDEX PI, LLC, 4730 Milano Way, Oceanside, CA 92057 USA

Tel: 562-335-3788

E-mail: [sales@idexpi.com](mailto:sales@idexpi.com)

Website: [www.idexpi.com](http://www.idexpi.com)