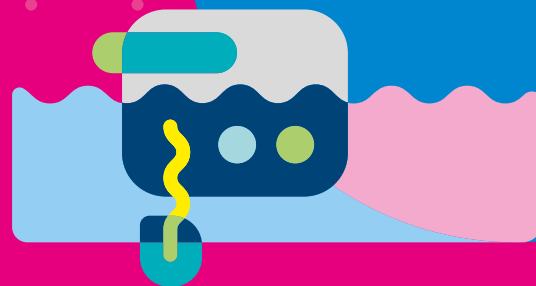


**Stock up now because  
your research can't wait.  
You are passionate  
for science.**

## **SPECIAL OFFERS**

**Pipettes & Lab Equipment**

Valid until



Passionate for science.



# GuardOne® Workstation.



## AVOID CROSS-CONTAMINATION & THE RISK OF DUPLICATING WORK

Protect your valuable samples and reagents<sup>1)</sup> to help prevent both the extra time, cost and waste involved when having to duplicate contaminated work. Starlab's GuardOne® Workstation provides the ideal clean and controlled environment. GuardOne® is perfect for your PCR / qPCR applications or any other application that requires a controlled, clean environment.

GuardOne® has been designed with convenience in mind. All functions are controlled via the glove compatible, easy to use touchscreen. Tool-free HEPA filter exchange and UV lamp exchange in just 2 minutes!

from:

### DESIGNED WITH THE ENVIRONMENT IN MIND

Long-life consumables reduces waste. Minimal packaging volume reduces transportation needs. Minimal power consumption.



Dead Air Workstation 32"

S8040-1000



Dead Air Workstation 48"

S8040-1001



Laminar Flow Workstation 32"

S8040-0000



Laminar Flow Workstation 48"

S8040-0001

- One-touch QuickStart / QuickStop settings
- Efficient UV<sub>245 nm</sub> decontamination with timer function
- Efficient, class H14 HEPA filter with pre-filter provides ISO class 5 working environment<sup>2)</sup>
- Real-time airflow measurement<sup>2)</sup>
- Life-span monitoring of consumables
- Virtually maintenance-free
- Easy to clean
- Easy, tool-free 15-minute assembly

<sup>1)</sup>GuardOne® is not designed to protect the user.

<sup>2)</sup>Laminar flow models only.



# Starlab Vortex Mixer.



WATCH VIDEO

## GREAT FEATURES. GOOD VIBRATIONS!

The new Starlab Vortex Mixer is ideal for the gentle mixing of samples right up to vigorous vortex mixing and the resuspending of cells or chemical pellets.

- Unique, glove compatible touch screen
- Precise vortexing speeds (300 to 3,500 rpm)
- One-touch pre-set options for speed / time
- Touch or continuous operation
- End of run audible alarm
- Power-saving sleep mode
- Optional adapters available separately to mix up to 15 microcentrifuge tubes or one microplate (up to 1,500 rpm)

**TOUCH MODE**  
Minimal pressure required to maintain vibration. Mix single or multiple tubes up to 3,500 rpm.

**GLOVE COMPATIBLE TOUCHSCREEN**  
for precise speed and time settings

**SMOOTH, QUIET OPERATION**



**POWER-SAVING SLEEP MODE**

**SPEED RANGE**  
300 – 3,500 RPM

**ANTI-SLIP FEET**  
provides stability on the bench during mixing

## Vortex Mixer.

Art. No. S8010-0000

List:

**OFFER:**

# The Starlab Aspirator.

## USE TWO HAND CONTROLLERS WITHOUT ANY LOSS OF PERFORMANCE

- Powerful pump that can operate two hand controllers without any loss of performance
- Auto ON-OFF pump switch
- Low noise emission for a quieter working environment
- Supplied with everything you need to get started
- Versatile! A whole range of accessories also available
- The perfect partner for use with Starlab's bottle top filtration system

**N2400-9000** includes everything you need to get started: Aspirator, 4 Litre Polypropylene Bottle with Protection Filter and Inlet Pipe, Hand Controller, including 2.5 m Tubing, a Wall Mount, an Adapter for Pipettes, and an Adapter for Pipette Tips.



## DESIGNED FOR THE SAFE AND EFFICIENT ASPIRATION OF FLUIDS

- Vacuum level and suction power is adjustable in 8 steps (150 to 850 mbar) for safe and reproducible working
- The chemically-resistant pump automatically switches on/off to reduce noise level in the workplace
- You can also use the Aspirator as a mobile vacuum source for sterile filtration and solid phase extraction
- Additional hand controllers and a range of other accessories are available. See website for details

## Aspirator

Art. No. N2400-9000

List:

**OFFER:**

Discover our range of Aspiration Pipettes



**FULLY AUTOCLAVABLE**  
ergonomically designed hand controller

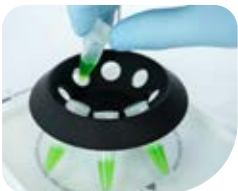
# The Minicentrifuge.

## AHEAD OF THE CURVE!

Ideal for all your quick spin-downs, the Starlab Minicentrifuge is not all about style, it also has substance! This is a compact and solid unit that delivers a quiet, smooth operation and a maximum speed of 6,500 rpm.

- Quick start on lid closure
- Magnetic lid lock
- One-touch STOP for fast braking and automatic lid release

## SUPPLIED WITH TWO ROTORS



Tube Rotor holds up to eight microcentrifuge tubes or eight conical or skirted screw cap microtubes



PCR Strip Rotor holds two, 0.2 ml 8-strips or 32 x 0.2 ml single tubes.



**QUICK START**  
just close the lid  
to start spinning!

**QUICK & EASY  
TOOL FREE  
ROTOR EXCHANGE**

**ONE-TOUCH  
STOP** for fast  
braking and  
lid release

**MAGNETIC  
LID LOCK**  
aids easy,  
one-handed  
operation



**WATCH VIDEO**

## Minicentrifuge.

Art. No. S8030-5000

List:

**OFFER:**

# The versatile Mixer HC.

## ONE SMALL DEVICE, SO MANY USES.

The Mixer HC is a smart bit of kit that does the work of several other pieces of equipment in the lab. Easy to use and to program, the Mixer HC will become an invaluable benchtop companion to help speed up your laboratory tasks. You will wonder how you ever managed without one!

**MIXING**  
up 1,500 rpm

**HEATING**  
up 99 °C

**COOLING**  
to 13 °C  
below room  
temperature



**TIMING**  
1 min to  
99:59 hours

**FUNCTIONAL**  
Alternate between  
mixing and resting.  
Create your own  
protocols.  
Or instant mixing  
at the push of a  
button



**WATCH VIDEO**

## Mixer HC

Art. No. **S8012-0000** (Excludes Thermoblock)

List:

**OFFER:**

## NINE EXCHANGEABLE THERMOBLOCKS

Use the Mixer HC with all popular tubes and plates.



24 x 0.5 ml  
Microcentrifuge  
Tubes  
**S8012-0010**<sup>1)</sup>



24 x 1.5 ml  
Microcentrifuge  
Tubes  
**S8012-0011**<sup>1)</sup>



24 x 2.0 ml  
Microcentrifuge Tubes,  
Round Bottoms  
**S8012-0012**<sup>1)</sup>



24 x 2.0 ml  
Microcentrifuge Tubes  
Ø 12 mm, V-Bottoms  
**S8012-0013**



8 x 5.0 ml  
Preparation Tubes  
**S8012-0014**



8 x 15 ml Conical  
Centrifuge Tubes  
**S8012-0015**



4 x 50 ml Conical  
Centrifuge Tubes  
**S8012-0016**



24 x 1.5/2.0 ml  
Cryo Tubes  
**S8012-0017**



Micro/Deepwell  
Plate, with Lid  
**S8012-0018**



Adapter Plate  
96 x 0.2 ml Tubes or  
one PCR plate  
(Use with S8012-0018)  
**S8012-0019**



ISO-Rack:  
24 x 0.5 ml  
Microcentrifuge  
Tubes  
**S8012-0020**



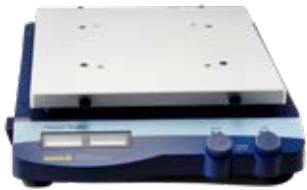
ISO-Rack:  
24 x 1.5/2.0 ml  
Microcentrifuge  
Tubes  
**S8012-0021**

<sup>1)</sup> Includes ISO Rack. Tubes not included.

# Shaking & Mixing.

ESSENTIAL EQUIPMENT FOR DAILY TASKS

## Orbital Shaker.



- Speed range: 100–500 rpm
- LCD displays for speed & time
- Continuous or timed mixing
- Supplied without platform

**Orbital Shaker**  
**Art. No: N2400-8030**  
(excludes platform)

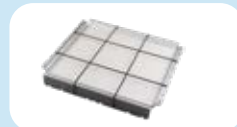
List:  
**OFFER:**



Platform with clamping rolls  
(for use with Orbital, 3D and Rocking Shakers)

**Art. No: N2400-8011**

List:  
**OFFER:**

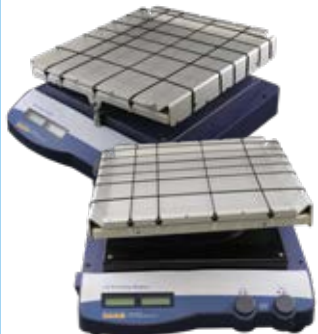


Platform with rubber mat and bungee cords  
(for use with Orbital, 3D and Rocking Shakers)

**Art. No: N2400-8021**

List:  
**OFFER:**

## 3D / Rocking Shakers.



- See saw rocking or 3D mixing
- Speed range: 10 –70 rpm
- LCD displays for speed & time
- Continuous or timed mixing.
- Supplied with platform with bungee cords

**Rocking Shaker**  
**Art. No: N2400-8010**

List:  
**OFFER:**

**3D Rocking Shaker**  
**Art. No: N2400-8020**

List:  
**OFFER:**



## Rotator Mixer.

**Art. No. N2400-5000**

List:  
**OFFER:**

- Controlled sample inverting
- Speed range: 1 – 100 rpm
- Programmable
- Three different motions
- Variable speed and timer
- Low profile and small footprint



**Vertical Rotation**  
360° vertical motion for time period of 0–250 seconds, or non-stop.



**Reciprocal Motion**  
Platform direction changes in turns (turning angle 1–90°) for 0–250 seconds, or non-stop.



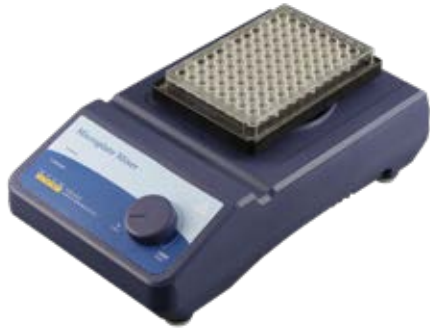
**Vibration**  
Same as reciprocal motion, plus additional vibration (turning angle 1–5° for 1–5 seconds.



**Pause**  
Platform direction changes in turns, incl. a temporary motion stop of 1–5 seconds (in conjunction with reciprocal motion only).

# Mixing & Stirring.

## ESSENTIAL EQUIPMENT FOR DAILY TASKS



Use for mixing and shaking any skirted plate with a SBS footprint, and for resuspending pellets.

- Speed range: 0 – 1500 rpm
- Stepless speed control
- Range of accessories available

### Microplate Mixer.

Art. No. N2400-8040

List:  
**OFFER:**



An economical magnetic stirrer.

- Speed range: 100 – 1500 rpm
- Stirring volume up to 3 litres
- Supplied with 1 x 40 mm stir bar

### Magnetic Stirrer.

Art. No. N2400-2010

List:  
**OFFER:**



Fast temperature ramping saves you time!

- Speed range: 200 – 1500 rpm.
- Temperature range:  
ambient to 280 °C (1°C increments)
- Stirring volume up to 3 litres
- Supplied with 1 x 40 mm stir bar

### Magnetic Stirrer with Heating.

Art. No. N2400-3010

List:  
**OFFER:**



# Rolling.



Built for continuous operation. Suitable for applications such as hybridisation.

- Simultaneous rolling and tilting motion
- Speed control up to 70 rpm
- Six rollers holds load up to 4 kg

## Tube Roller.

Art. No. **N2400-7010**

List:  
**OFFER:**

# Pipette Stands.



**ErgoOne® Universal Carousel Stand**  
for up to 8 pipettes (UV Resistant)

For use with: ErgoOne®, Biohit®, Finn®, Gilson®, Rainin® single or multi-channel pipettes **S7200-0000**



**Universal Acrylic Pipette Stand**  
for up to 5 pipettes (UV Resistant)

For use with: ErgoOne®, Biohit®, Finn®, Eppendorf®, Gilson®, Rainin® single or multi-channel pipettes **E3099-0000**



**ErgoOne® Self-Adhesive Shelf Holder**  
for 1 pipette (UV Resistant)

For ErgoOne® single or multi-channel pipettes **E3099-0001**



**ErgoOne® Bench Support**  
for 1 pipette

For ErgoOne® single-channel pipettes **E3099-0002**

Pack of 5.



**ErgoOne® Wall Mount**  
for 1 pipette (UV Resistant)

For use with: ErgoOne®, Eppendorf®, Finn®, Gilson®, Rainin®, Sartorius® single or multi-channel pipettes with finger hook **S7200-0001**



**ErgoOne® E Charging Stand**  
for up to 3 pipettes

For ErgoOne® E single-channel pipettes (excluding 5 ml) **G9999-1001**



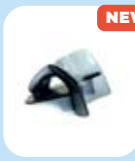
**ErgoOne® E Individual Stand**  
for 1 single-channel pipette

10 µl to 1000 µl **G9999-1002**      5000 µl **G9999-1003**



**ErgoOne® E Individual Stand**  
for 1 multi-channel pipette

For ErgoOne® E multi-channel pipettes (excluding 1250 µl) **G9999-1004**



**NEW!** **ErgoOne® E Shelf-Holder**  
for 1 pipette

For ErgoOne® E single or multi-channel pipettes, all volumes **G9999-1009**



**NEW!** **ErgoOne® E Wall Mount**  
for 1 pipette

For ErgoOne® E single or multi-channel pipettes, all volumes **G9999-1010**



**NEW!** **ErgoOne® E Individual Stand**  
for 1 pipette

For ErgoOne® E single or multi-channel pipettes, all volumes **G9999-1011**

Pipettes not included.

# ErgoOne® FAST Pipette Controller.

**FLEXIBLE, ACCURATE, SAFE TRANSFER**



## ERGONOMY MEETS MODERNITY

Every aspect of the ErgoOne® FAST has been developed with ergonomics in mind.

## ErgoOne® FAST

Art. No. S7166-0010

List:

**OFFER:**



**WATCH VIDEO**

- Lightweight and ergonomic
- Designed to balance perfectly in the hand for maximum comfort
- Smooth operation via pressure sensitive control buttons
- Fast! Fills a 25 ml pipette in less than 4 seconds
- Long-life battery provides 25 x ~2000 aspiration cycles on a full charge
- Battery life indicator
- Battery maintains constant pipetting speed that does not diminish as battery charge declines
- Can be recharged during use
- Use with all glass or plastic pipettes, 1.0 ml to 100 ml

Discover our range of  
**Serological Pipettes**



Pressure responsive speed controls



Autoclavable aspiration cone and silicone pipette holder ensures a secure seal for your liquids while the filter protects your pipette



Traffic light battery life indicator



Easy to replace battery



**Benchtop support** allows you to place the controller on the bench or hood floor without risk of contamination

**ErgoOne® FAST  
Benchtop Support**

Art. No: P7166-6306

List:

**OFFER:**

# ErgoOne® E Electronic Pipettes.

## INCREASE EFFICIENCY IN YOUR LAB

- Easy to use intuitive menu structure
- Lightweight, ergonomic design
- Adjustable finger rest for individual comfort
- Significantly reduced tip loading and ejection forces
- Universal tip fit

**ErgoOne® E**  
from:

### ErgoOne® E OPERATING MODES

Pipetting | Reverse Pipetting | Mixing  
Dispense | Electrophoresis<sup>1)</sup>

#### Single-Channel ErgoOne® E Pipettes

G9001-0010	G9001-0020	G9001-0200	G9001-1000	G9001-5000
0.5 – 10 µl	2.0 – 20 µl	10 – 200 µl	50 – 1,000 µl	250 – 5,000 µl

#### 8-Channel ErgoOne® E Pipettes

G9008-0010	G9008-0020	G9008-0100	G9008-0300	G9008-1250
0.5 – 10 µl	1.0 – 20 µl	5.0 – 100 µl	15 – 300 µl	50 – 1250 µl

#### 12-Channel ErgoOne® E Pipettes

G9012-0010	G9012-0020	G9012-0100	G9012-0300	G9012-1250
0.5 – 10 µl	1.0 – 20 µl	5.0 – 100 µl	15 – 300 µl	50 – 1250 µl



**NEW!**  
50 – 1250 µl  
multi-channel  
pipettes



See page 9  
for stands

<sup>1)</sup> GEL mode is not available on ErgoOne® E models: 1000 µl, 1250 µl, 5000 µl.

**MULTI-CHANNEL COMBO PACKS!** 10 µl to 300 µl multi-channel pipettes supplied with an individual stand (G9999-1004) and one rack of TipOne® pipette tips. 1250 µl models supplied with a pipette shelf holder (G9999-1009) and two racks of TipOne® pipette tips.

# ErgoOne<sup>®</sup> Manual Pipettes.



See page 9  
for stands

ACCURACY AND PRECISION YOU CAN TRUST!

- Ergonomic and lightweight
- Minimal operating forces
- Volume lock
- Universal tip fit (excl. 5.0 ml)
- Colour coded

ErgoOne<sup>®</sup>

from:



WATCH VIDEO

## Single-Channel Manual Pipettes

0.1 – 2.5 µl (red) <b>S7100-0125</b>	0.5 – 10 µl (red) <b>S7100-0510</b>	2 – 20 µl Micro (red) <b>S7100-0221</b>	2 – 20 µl (yellow) <b>S7100-0220</b>
---	--	--	---

10 – 100 µl (yellow) <b>S7100-1100</b>	20 – 200 µl (yellow) <b>S7100-2200</b>	100 – 1,000 µl (blue) <b>S7110-1000</b>	500 – 5,000 µl (violet) <b>S7150-5000</b>
---	---	--	--

## 8-Channel Manual Pipettes

0.5 – 10 µl (red) <b>S7108-0510</b>	10 – 100 µl (yellow) <b>S7108-1100</b>	30 – 300 µl (green) <b>S7108-3300</b>
--	---	--

## 12-Channel Manual Pipettes

0.5 – 10 µl (red) <b>S7112-0510</b>	10 – 100 µl (yellow) <b>S7112-1100</b>	30 – 300 µl (green) <b>S7112-3300</b>
--	---	--

# ErgoOne® Starter Packs.



**Reliability is key** so your pipette must be trusted to provide accurate and precise pipetting, day in, day out. ErgoOne® manual pipettes provide you with both the reliability you need and an ergonomic design that prevents fatigue over long periods to help keep your pipetting consistent. ErgoOne® pipettes have tighter specifications than ISO8655, and feature a volume lock to ensure the correct volumes in your reaction.

CONTENTS	STARTERPACK	STARTERPACK42.5	STARTERPACK410
<b>0.1 – 2.5 µl ErgoOne® Single-Ch Pipette</b> S7100-0125		●	
<b>0.5 – 10 µl ErgoOne® Single-Ch Pipette</b> S7100-0510			●
<b>2.0 – 20 µl ErgoOne® Single-Ch Pipette, Standard Cone</b> S7100-0220	●	●	●
<b>20 – 200 µl ErgoOne® Single-Ch Pipette</b> S7100-2200	●	●	●
<b>100 – 1000 µl ErgoOne® Single-Ch Pipette</b> S7110-1000	●	●	●
<b>TipOne® Pipette Tips</b> (three racks of sterile tips per pack)	●	●	●
<b>Self-Adhesive Pipette Holder</b> (one holder per pipette supplied)	●	●	●
<b>Laboratory Timer</b> (one timer per pack)	●	●	●
	<b>OFFER*</b>		

ErgoOne® pipettes and Starlab's trusted TipOne® pipette tips create the perfect pipetting partnership.

# Brady® Printer & Labels.



## PRINTER FEATURES

- 133 symbols
- Barcoding options
- Auto label function cuts according to the size of the vial
- Automated serialisation
- Save up to 12 label styles
- Time and date stamp
- Three-line LCD display for clear visibility
- Auto shut-off saves battery life

## Brady M210-LAB PRINTER

Blister pack containing Printer, Quick Start Guide, N5127-7425 label cartridge ready installed. Batteries not included. 2-year warranty.

Art. No: N3000-2000

List:

**OFFER:**

## HIGH QUALITY LABEL MATERIALS DESIGNED FOR THE LAB ENVIRONMENT

Label Cartridge Information & Ordering						Label Applications			
Label material	Colour	Width	Article No.	List	OFFER	Material specifications / applications	Vials	Slides	Plates
B-595 Vinyl	Various <sup>1)</sup>	9.5 mm	<b>N3795-439#<sup>2)</sup></b>			Freezer: Min. -40 °C.	0.5 ml		✓
	White	9.5 mm	<b>N3795-4399</b>				0.5 ml		✓
B-461 Polyester	White	9.5 mm	<b>N3795-4619</b>			Freezer: Min. -80 °C. Liquid Nitrogen <sup>2)</sup> : -196 °C. Autoclave: 121 °C. Hot Water Baths: 100 °C. Barcoding (19.1 mm only) Low profile, extremely thin labels.	0.5 ml		✓
	White	12.7 mm	<b>N5127-4619</b>				1.5 ml		✓
	White	19.1 mm	<b>N7519-4619</b>				2.0 – 50 ml		✓
B-488 Polyester	White	9.5 mm	<b>N3795-4889</b>			Freezer: Min. -80 °C. Autoclave: 121 °C. Barcoding (19.1 mm labels only)	0.5 ml	✓	✓
	White	12.7 mm	<b>N5127-4889</b>				1.5 ml	✓	✓
	White	19.1 mm	<b>N7519-4889</b>				2.0 – 50 ml	✓	✓
B-499 Nylon	White	9.5 mm	<b>N3795-4999</b>			Freezer: Min. -80 °C. Liquid Nitrogen <sup>2)</sup> : -196 °C. Autoclave 121 °C.	0.5 ml	✓	✓
	White	12.7 mm	<b>N5127-4999</b>				1.5 ml	✓	✓
	White	19.1 mm	<b>N7519-4999</b>				2.0 – 50 ml	✓	✓
B-7425 Polypropylene	White	9.5 mm	<b>N3795-7425</b>			Freezer: Min. -80 °C. Liquid Nitrogen <sup>2)</sup> : -196 °C. Autoclave: 121 °C. Hot Water Baths: 100 °C. Barcoding (19.1 mm only)	0.5 ml	✓	✓
	White	12.7 mm	<b>N5127-7425</b>				1.5 ml	✓	✓
	White	19.1 mm	<b>N7519-7425</b>				2.0 – 50 ml	✓	✓
B-423 Polyester	White	19.1 mm	<b>N7519-4239</b>			Freezer: Min. -80 °C. Autoclave: 121 °C. Hot Water Bath: 100 °C Barcoding	2.0 – 50 ml	✓	✓
B-430 Polyester	Clear	19.1 mm	<b>N7519-4300</b>			Freezer: Min. -80 °C. Autoclave: 121 °C. Hot Water Bath: 100 °C Barcoding	2.0 – 50 ml	✓	✓
B-403 Paper Water Dissolvable	White	19.1 mm	<b>N7519-4039</b>			For temporary labelling/barcoding. Dissolves within 30 seconds of contact with warm water.	Erlenmeyers or any reusable container that requires frequent re-labelling		

<sup>1)</sup> To order colour required, replace # as last digit of Article No. with: 1 for blue, 2 for green, 4 for red, 6 for yellow.

<sup>2)</sup> Acceptable for use in liquid nitrogen only if the ends of the label overlap.

All labels 6.4 m long, except B-499 Nylon which are 4.8 m long. All suitable for use with Brady printers: LabPal™, BMP™21, BMP™21-PLUS and M210-LAB.

# Erlenmeyer Flasks.

NEW!

## DESIGNED TO BE REUSED

Ideal for the cultivation of bacteria, yeast and fungi, as well as plant and animal cells in suspension. Autoclavable and reusable.

## PRODUCT FEATURES:

- Optically clear polycarbonate flasks
- Moulded graduations for easy volume measurement
- Leakproof and shatterproof
- Dual-function, vented polypropylene cap provides sterile air exchange or a tight seal
- Suitable for use for both aerobic and anaerobic cultures
- 0.22 µm PTFE cap membrane
- Compatible with standard shaking incubator tables and clamps
- Individually-wrapped
- Sterility level (SAL 10<sup>-6</sup>) fulfils the highest demands
- Certified RNase, DNase, DNA and Pyrogen free
- Autoclavable and reusable up to 10 times



	Description	Pack Size	Art. No.	List Price	OFFER*
<b>FLAT BASE</b> 	125 ml Erlenmeyer Flask, Flat	24	<b>E5000-1012</b>		
	250 ml Erlenmeyer Flask, Flat	12	<b>E5000-1025</b>		
	500 ml Erlenmeyer Flask, Flat	12	<b>E5000-1050</b>		
	1000 ml Erlenmeyer Flask, Flat	6	<b>E5000-1100</b>		
	2000 ml Erlenmeyer Flask, Flat	6	<b>E5000-1200</b>		
	3000 ml Erlenmeyer Flask, Flat	3	<b>E5000-1300</b>		
<b>BAFFLED BASE</b> 	125 ml Erlenmeyer Flask, Baffled	24	<b>E5001-1012</b>		
	250 ml Erlenmeyer Flask, Baffled	12	<b>E5001-1025</b>		
	500 ml Erlenmeyer Flask, Baffled	12	<b>E5001-1050</b>		
	1000 ml Erlenmeyer Flask, Baffled	6	<b>E5001-1100</b>		
	2000 ml Erlenmeyer Flask, Baffled	6	<b>E5001-1200</b>		
	3000 ml Erlenmeyer Flask, Baffled	3	<b>E5001-1300</b>		



## DUAL-FUNCTION CAPS

Polypropylene caps with a 0.22 µm PTFE membrane, ideal for both aerobic and anaerobic cultures. Remove the top section to allow sterile exchange, and then replace when ready. Avoid contamination risk and the hassle of switching caps and stock only one flask type for all cultures.

# 5.0 ml Tips for ErgoOne® E.

## OPTIMAL TIP FIT

Ideal for delicate pipetting out of tall and narrow vessels, these 5.0 ml tips are provided in an easy-to-handle round rack.

## PRODUCT FEATURES:

- Slim design: 160 mm long and approx. 9.6 mm in diameter, these tips are perfect for pipetting from tall and narrow vessels
- Compatible with ErgoOne® E, Brand® and Finnpiquette®
- Certified RNase, DNA and ATP free

Art. No: **E1070-2607**  
Pack size: 1 x 28-tip rack

List:

**OFFER:**



## 5.0 ml ErgoOne® E electronic pipette.

**G9001-5000**

250 – 5,000 µl ErgoOne® E

List:

**OFFER:**

See page 11 for the full range of ErgoOne® E pipettes on offer.



\*Offer prices valid until

Distributed by: